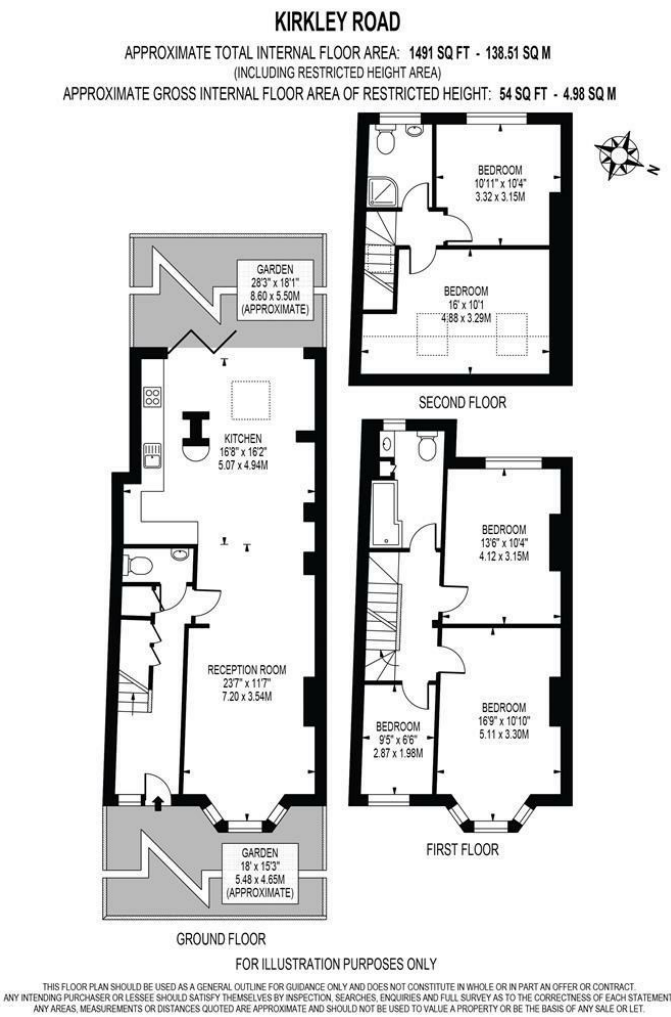


Kirkley Road, Wimbledon, SW19 3AZ

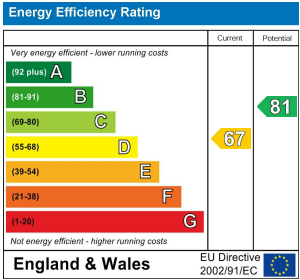
Ellisons

Wimbledon  
Sales  
13 Queens Road, Wimbledon  
London SW19 8PF  
T 020 8944 9494  
E [wimbledon@ellisons.uk.com](mailto:wimbledon@ellisons.uk.com)  
[www.ellisons.uk.com](http://www.ellisons.uk.com)

Kirkley Road  
Wimbledon, SW19 3AZ



FOR A FREE MORTGAGE QUOTE AND BEST MORTGAGE RATES, CALL  
ELLISONS MORTGAGE ADVISOR ON 020 8944 9494



£1,295,000: Freehold



A larger than average Edwardian end of terrace house, offering five bedrooms and two bathrooms, available to the market with no onward chain. Enviably located in the highly sought-after “Australia's” area of Wimbledon, the property benefits from excellent commuter links for the Northern and District Line, the wide open spaces of Merton Park, and the amenities of Wimbledon Town Centre along with sought after local schools. Well presented throughout and offers generous, well-balanced accommodation. The ground floor features a spacious double-length reception room, a superb open-plan kitchen/dining room and W/C. This impressive space benefits from bi-fold doors opening onto a south-west facing garden. The first floor comprises two spacious double bedrooms, a further single bedroom ideal as a study or nursery, and a contemporary family bathroom. The converted loft provides two additional bedrooms, a further bathroom. Homes of this size, finish, and location are rarely available. Early viewing is highly recommended.



**SPECIFICATION:**

- Edwardian End Of Terrace House
- Five Bedrooms & Two Bathrooms
- Reception Room
- Desirable Old Merton Park Location
- Open-Plan Kitchen/Dining Room & WC
- South-West Facing Garden
- Close to Multiple Transport Links & Excellent Schools
- No Onward Chain
- EPC - D
- Council Tax Band E

